

CORNWALL²⁰¹⁸

A selection of 4 star cottages, villas and apartments
plus a 3 star manor house hotel



Breaks In Cornwall

DISCOVER CORNWALL



Images

Clockwise:
Mousehole,
Bissoe Trail,
Rough Tor Minions,
Truro,
Daymer Beach.

Images courtesy of
Visit Cornwall.

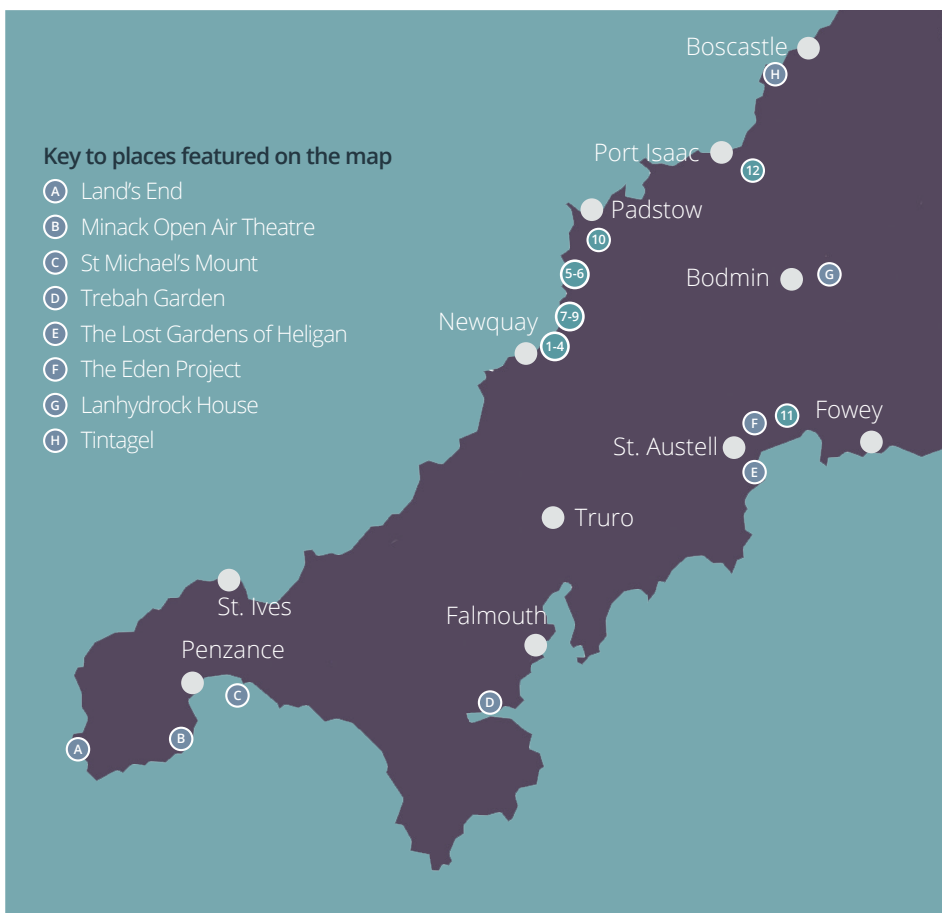


Memories are made in Cornwall

For many, Cornwall evokes childhood memories of family holidays with wide golden beaches and crystal clear waters surrounding a stunning coastline. Today there's still quaint villages and unspoilt coves but Cornwall has grown up and it now offers so much more.

Foodie hotspot

Thanks to celebrity chefs such as Rick Stein and Jamie Oliver, Cornwall is now highly regarded as a foodie hotspot. Rich in home grown delicacies, fresh seafood and a growing number of artisan breweries, fresh seasonal produce is making its way onto many a menu. First class restaurants, trendy seafood joints, beachside cafés, tea rooms and cosy pubs can be found a plenty.



Surrounded by sea

There really is a beach for almost every day of the year in Cornwall! Rugged cliffs hug the northern Atlantic coast where the remnants of once hard-working engine houses perch precariously looking out to sea, but there are plenty of beautiful sweeping sands on the north coast too. Creeks and valleys add to the beauty of the more sheltered south where there's also an abundance of sandy coves to be discovered.

Glorious gardens and a rich heritage

The temperate nature of Cornwall's climate has given rise to a number of award winning sub-tropical gardens bursting with colourful and unusual flora and fauna. Although not strictly a garden, the iconic Eden Project has been consistently voted the UK's best tourist attraction. With its mighty biomes housing the world's largest indoor rainforest, it's both inspirational and educational.

Porth

- ① Porth Veor Manor Hotel *p8*
- ② Porth Veor Villas & Apartments *p14*
- ③ Beach House *p18*
- ④ Porth Cottage *p20*

Mawgan Porth

- ⑤ Mawgan Porth Apartments *p22*
- ⑥ White Lodge Apartments *p26*

Watergate Bay

- ⑦ Beachcombers Apartments *p28*
- ⑧ Waves Apartments *p32*
- ⑨ Tregurrian Villas *p34*

St Merryn, near Padstow

- ⑩ Bay Retreat Villas *p36*

Penpillick, near Fowey

- ⑪ Green Acres Cottages *p40*

Camelford

- ⑫ Juliots Well Cottages *p44*



Take time if you can to explore one of the many historic houses or castles, perhaps delve down a mine, visit diverse museums, hop on a steam train or scare yourself on a tour of a reputedly haunted Bodmin Jail.

Watch out for film crews

The clear light and stunning scenery of Cornwall is a magnet to artists, writers and film crews, keen to capture the beauty of the county and its bewitching backdrop. Take a trip to the Tate St Ives, discover Poldark country or pay a visit to Doc Martin's pretty harbour village at Port Isaac.

Images

Clockwise:
Tintagel Castle,
North Helford,
Eden Project,
St Mawes.



COME AGAIN AND SAVE!

In addition to our **FREE night offers**, you can **save an extra 20%!**

When you book any 2018 holiday with us, you automatically **qualify for a 20% discount off all accommodation prices** shown in this brochure for any further holiday(s) in 2018, usually a minimum of 3 nights.

Offer applies to any of our properties, subject to availability and excludes 29 Mar – 13 Apr, 25 May – 1 Jun, 20 Jul – 31 Aug, 19 – 26 Oct, 30 – 31 Dec.

Magnificent and unusual

From St Michael's Mount, rising majestically out from the sea near Penzance, to the Minack, one of the most unique theatres in the land, being carved out of a granite cliff, near Porthcurno, there's a great deal to discover. This is where you can visit the most westerly and the most southerly point of mainland Britain in an hour.

Legend, food and history are celebrated throughout the seasons in festivals full of creative entertainment, music and dancing.



The great outdoors

For the more adventurous, whether you love flying kites, surfing or kayaking, heading out on a sea safari, coasteering, cycling or walking, there are plenty of places to go and adventures to be had – come to Cornwall and experience them for yourself!

One thing is for certain, whatever you choose to do in Cornwall, wherever you go, you'll never be far from the spellbinding rhythm of the sea.

Images

Clockwise:
Marazion,
St Anthony Head,
Gweek,
Newquay harbour.

Once booked, prices guaranteed.

Beaucliffes | Restaurant

OFFER FOR SELF CATERING GUESTS

Enjoy superb dining at Beaucliffes Restaurant. Special discounts to all self catering guests!

**SAVE 20% off
our main menu* dinner prices.**

Children can eat FREE from our special menu when the adults dine from the à la carte menu.

Full Cornish breakfast for £7.95 per person or £6 if taken for full holiday duration (non-residents £10.95). Children under 14 years 50%.

* excludes Early Diner menu

Porth Veor Manor Hotel *Porth, near Newquay*



**Best
Western.**

Porth Veor Manor Hotel

Porth ★★★ Open all year 42 guests



The Porth Veor Manor is a charming mid-19th century Manor which enjoys an elevated position overlooking Porth beach.

Just a few minutes' stroll down from the grounds via a private footpath is direct access to the sandy beach and the coastal paths to the neighbouring bays of Watergate and Mawgan Porth.

The hotel offers a tranquil haven yet is only a mile from Newquay, Cornwall's premier resort. Amenities include a restaurant with a high standard of cuisine and a good wine cellar, an attractive, well-stocked bar, lounge areas with a light and airy conservatory plus a heated outdoor pool with a sun terrace.

Lunchtime snacks are served daily and morning coffee and afternoon teas are available in the bar, lounges, gardens or on the terrace.





Excellent facilities

- » Bedrooms are all well furnished with private bath (or shower) and toilet, central heating, satellite tv with a wide range of channels including Sky Sports, plus tea/ coffee maker
- » Family rooms are available for two adults plus a maximum of three children, in extra child beds or bunk beds
- » Group discounts available, details on request
- » Outdoor heated swimming pool open April – October
- » Small putting green
- » Licensed bar and lounge areas
- » Beaucliffes Restaurant
- » Private car park
- » FREE WiFi throughout the hotel

Porth Veor Manor Hotel *Porth, near Newquay*



SAVE MORE Come again in 2018 and save 20%. Please refer to page 6 for details.

Our dedicated management and staff take your holiday enjoyment most seriously, offering a friendly, attentive, yet unobtrusive service.

There are plenty of relaxing areas at the Manor from the poolside sun terraces and patios leading from the restaurant to the terraced lawns overlooking the beach. In the winter months enjoy the intimate charm of the bar and conservatory with the added warmth of the open log fire.



Disabled Clients are most welcome. The bar, restaurant and conservatory are all on the ground floor. However there is no lift, and all the bedrooms are on the 1st/2nd floors and are unsuitable if confined to a wheelchair or with severe walking difficulties. If unsure, please ask.



Porth Veor Manor 2018 standard tariff

Prices £ PER ROOM with private bath (or shower) and toilet.
Any arrival day, subject to space.

Room & full Cornish breakfast				
Duration	Per nt	3 nts	4 nts	7 nts
Up to 28 Mar	120	360	360	599
29 Mar - 31 Oct	140	420	420	699
1 Nov - 22 Dec	120	360	360	599

New Year – prices on request.

Supplements PER ROOM per night:

Beach view £10, Superior room with beach view and ipod docking station £20, Single room 50% reduction.

Supplements PER PERSON per night:

Half-board – 3 course table d'hôte dinner £22 – if booked for full duration.

Children: Under 14 years FREE when sharing with 2 adults. Regret under 2's not accepted.



FREE nights.

All prices shown above include a FREE night for min. stays of 4 nights and 2 FREE nights for 7 night stays.



Porth Veor Manor Weddings

What better setting for your perfect day than an elegant nineteenth century manor house with original fireplaces, a sweeping staircase, extensive gardens and views across Porth Bay to Trevose Head Lighthouse.

Ask for our Weddings Brochure.

Advance Purchase Discount – save 20%. Book at least 2 calendar months in advance paying in full at the time of booking and save 20% off the above prices. This Advance Purchase tariff is non-changeable, non-refundable and not valid in conjunction with the “Come Again & Save” discount.



Check-in normally ready on arrival from 3pm.

Beaucliffes Restaurant *at Porth Veor Manor, Porth*



B|R

Beaucliffes Restaurant enjoys a well earned reputation for

great food and service, and the lounge areas, conservatory and terrace are perfect for a pre-dinner drink or two.

Breakfast at Beaucliffes

Start the day with our full Cornish breakfast, where you can enjoy fresh fruit juices, dried fruit and yoghurt, cereals, a selection of breads and pastries, plus a wide choice of cooked dishes.

Dinner at Beaucliffes

All dishes are freshly prepared by our team of dedicated chefs – available from 5.30pm with last orders at 8.30pm. Our head chef has designed a seasonally changing menu to gain the most from the quality produce available locally.

Daily specials are also on offer.

Each dish is individually priced, so guests can choose from 1, 2, 3 or 4 courses.

Smart casual dress code is requested for dinner please.



Arrangements can be made for vegetarians and special diets and our chefs are more than happy to cater to your individual requirements.

Guests staying at any of our holiday properties are most welcome to use Beaucliffes. Table reservation is recommended, details provided on arrival.

Please note that our chefs take great care to reduce both fat and salt levels in all our dishes by using low fat alternatives and natural sea salt.

Beaucliffes | Restaurant

at Porth Veor Manor Hotel

*Great food sourced from
award winning local suppliers*

Porth Veor Manor Villas and Apartments *Porth, near Newquay*



Porth Veor Manor Villas and Apartments Porth ★★★★★ Open all year



This award winning collection of eight villas and four apartments has been equipped and furnished to a very high standard and is available on a self catering, bed and breakfast or half board basis.

Set in the grounds of Porth Veor Manor, guests have full use of all the hotel amenities including the bar, restaurant, swimming pool and gardens.

Three of the villas have beach views and there is a private footpath giving direct access to Porth's long, sandy beach.



Disabled Clients are most welcome. However we only have one ground floor apartment suitable for guests with severe walking difficulties. Access to all the other units involves a variable number of steps/stairs. Some of our Beach House and Beachcombers Apartments may be suitable. If unsure, please ask.



Excellent facilities

- » 7 villas and 4 apartments each with 2 bedrooms, one double and one twin, plus one 3 bedroom villa with two doubles and one twin
- » All bedrooms have satellite tv
- » Each unit has 2 bathrooms, one en suite, plus an extra bathroom in the three bedroom villa
- » Lounge/diner with double sofa bed and satellite tv including Sky Sports
- » Well-equipped kitchen area with cooker, microwave, dishwasher, fridge and separate freezer, iron and board, plus a wide range of utensils, crockery and cutlery
- » All bedding, made up for your arrival and all towels/tea towels provided
- » Underfloor heating throughout
- » Reserved private parking (one space per property) with additional parking available
- » Patio or balcony
- » Laundry service (extra charge)

Porth Veor Manor Villas and Apartments *Porth, near Newquay*



Beaclubbes | Restaurant

SAVE at least 20%

All self-catering guests qualify for special reduced prices at Beaclubbes in Porth Veor Manor.

Please refer to page 7 for details.



Check-in normally ready on arrival day from 4pm.





Porth Veor Manor Villas and Apartments 2018 standard tariff

Any arrival day, subject to space. Minimum stay usually 3 nights.

Prices £ PER UNIT Max 6 persons*	2 bedroom apartment				2 bedroom villa/ apartment with pool view			
Duration	Per nt	3 nts	4 nts	7 nts	Per nt	3 nts	4 nts	7 nts
1 Jan - 28 Mar	105	315	315	400	125	375	375	500
29 Mar - 13 Apr	145	435	435	595	165	495	495	695
14 Apr - 24 May	120	360	360	530	140	420	420	630
25 May - 2 Jun	185	555	555	875	205	615	615	975
3 Jun - 22 Jun	145	435	435	665	165	495	495	765
23 Jun - 5 Jul	170	510	510	775	190	570	570	875
6 Jul - 19 Jul	200	600	600	895	220	660	660	995
20 Jul - 17 Aug	245	735	735	1225	270	810	810	1350
18 Aug - 27 Aug	235	705	705	1175	260	780	780	1300
28 Aug - 20 Sep	150	450	450	695	175	525	525	795
21 Sep - 18 Oct	120	360	360	530	140	420	420	630
19 Oct - 31 Oct	150	450	450	595	170	510	510	695
1 Nov - 22 Dec	105	315	315	400	125	375	375	500

Supplements £ PER UNIT to be added to 2 bedroom pool view prices.

Beach view	-	-	-	-	20	60	60	120
3 bedroom pool view	-	-	-	-	30	90	90	180

* Maximum capacity for all 2-bedroom units include a high quality double sofa bed in the lounge for two persons.



FREE nights. All prices shown above include a FREE night for minimum stays of 4 nights and between 2-3 FREE nights for 7 night stays.

Christmas and New Year breaks

For other dates/durations – prices on request

Prices £ PER UNIT	23 Dec 4 nts	23 Dec 7 nts	27 Dec 3 nts	27 Dec 7 nts	30 Dec 3 nts	30 Dec 4 nts	30 Dec 7 nts
2 bedroom apartment	390	500	250	500	390	390	430
2 bedroom pool view	420	560	290	560	420	420	490
3 bedroom pool view	495	710	365	710	495	495	640
2 bedroom beach view	480	680	350	680	480	480	610



SAVE MORE Come again in 2018 and save 20%. Please refer to page 6 for details.



Beach House Apartments *Porth, near Newquay*



Beach House Porth ★★★★★



These stylish, modern and well-appointed apartments are part of a select complex of just twelve properties. They enjoy a superb location virtually on the beach in Porth and just 200 yards from our hotel.

Guests are most welcome to use the facilities at Porth Veor Manor Hotel just a short walk away.

These include a bar, restaurant and conservatory plus of course the grounds and the heated swimming pool.



Beaucliffes | Restaurant

SAVE at least 20%

All self-catering guests qualify for special reduced prices at Beaucliffes in Porth Veor Manor.
Please refer to page 7 for details.



Beach House Apartments 2018 standard tariff

Prices £ PER UNIT Any arrival day, subject to space. Minimum stay usually 3 nights.

2 bedroom apartment *Max 4 persons*

Duration	Per nt	3 nts	4 nts	7 nts
1 Jan - 28 Mar	125	375	375	500
29 Mar - 13 Apr	160	480	480	650
14 Apr - 24 May	140	420	420	595
25 May - 2 Jun	195	585	585	975
3 Jun - 22 Jun	160	480	480	720
23 Jun - 5 Jul	180	540	540	840
6 Jul - 19 Jul	210	630	630	975
20 Jul - 17 Aug	270	810	810	1350
18 Aug - 27 Aug	250	750	750	1250
28 Aug - 20 Sep	165	495	495	750
21 Sep - 18 Oct	140	420	420	595
19 Oct - 31 Oct	160	480	480	660
1 Nov - 22 Dec	125	375	375	500

Supplements £ PER UNIT

to be added to above prices.

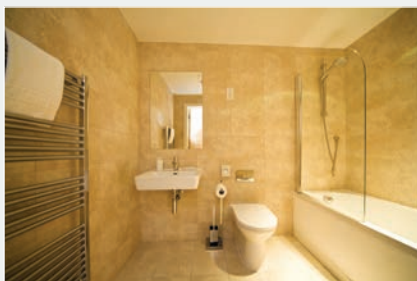
	3 bed sea view	45	135	135	270
--	----------------	----	-----	-----	-----



FREE nights. All prices shown above include a FREE night for min. stays of 4 nights and between 2-3 FREE nights for 7 night stays.

Excellent facilities

- » One double bedroom with en suite shower and toilet and tv (no tvs in the sea view apartment bedrooms), plus one twin
- » Three bedroom apartment has 2 doubles (one en suite) and a twin
- » Separate bathroom with bath and overhead shower
- » Lounge with dining area & tv
- » Well-equipped kitchen area, electric cooker and hob, microwave, dishwasher, fridge/freezer, washer dryer, plus a wide range of utensils
- » All bedding made up for your arrival and all towels/tea towels
- » Full central heating
- » Balcony or patio off lounge
- » Lift
- » One reserved parking space per property



SAVE MORE Come again in 2018 and save 20%. Please refer to page 6 for details.



Check-in normally ready on arrival day from 4pm.



Disabled Clients are most welcome but these properties are unsuitable for those confined to a wheelchair. All first and second floor apartments are served by a lift and there is also a ground floor unit. All rooms are on the same level. If unsure please ask.



Dogs are very welcome in 2 of our apartments, subject to advance booking (max 2) at £6 per dog per night. See page 47.



Christmas and New Year breaks

For other dates/durations – prices on request

Prices £ PER UNIT	23 Dec 4 nts	23 Dec 7 nts	27 Dec 3 nts	27 Dec 7 nts
2 bedroom	400	540	270	540
3 bed sea view	535	810	395	810
Prices £ PER UNIT	30 Dec 3 nts	30 Dec 4 nts	30 Dec 7 nts	
2 bedroom	400	400	490	
3 bed sea view	535	535	760	

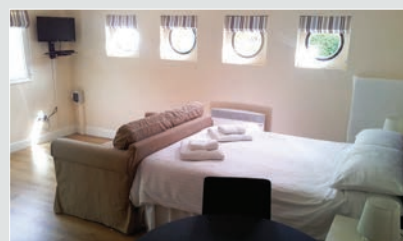
Porth Cottage *Porth, near Newquay*



Porth Cottage Porth ★★★★★



This delightful cottage dating back to around 1700 has been lovingly refurbished with all the modern essentials whilst still oozing with charm and character from a bygone era. With its low oak-beamed ceilings and traditional features, it is just 100 yards to the beach and adjacent to the grounds of our hotel where guests can make full use of all the amenities.

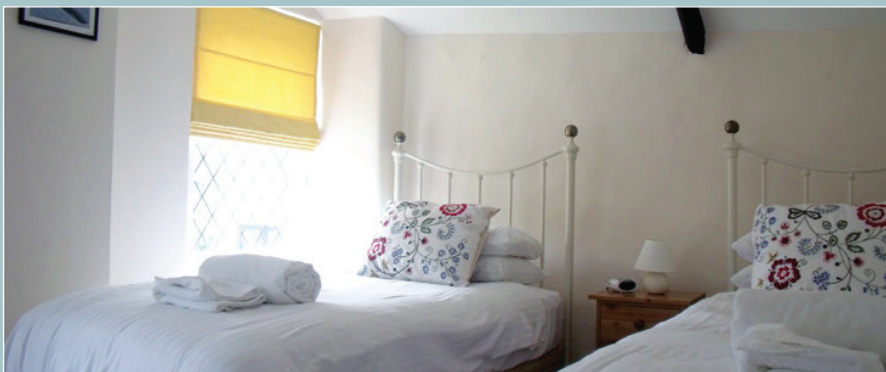


Studio Annexe

Situated immediately opposite Porth Cottage and accommodating up to 2 adults and 1 child, the Studio Annexe is self-contained but can be booked in conjunction with the cottage, thereby making it ideal for larger families. The Studio Annexe can also be booked independently offering comfortable accommodation at an affordable price and please note it is ungraded. Full details on website.



SAVE MORE Come again in 2018 and save 20%. Please refer to page 6 for details.



Excellent facilities

- » One double bedroom plus one twin
- » Bathroom with bath and shower attachment and toilet
- » Lounge with tv plus a small annexe lounge, a 'snug' room with a wood burner
- » Well-equipped kitchen/diner with cooker, microwave, dishwasher, fridge/freezer, wide range of utensils, crockery, cutlery
- » Utility room with washing machine, dryer, separate toilet
- » Heated throughout
- » All bedding made up for your arrival, and all towels and tea towels provided
- » Small patio and garden furniture
- » Private parking (one space). Additional parking available

Beaуcliffes | Restaurant

SAVE at least 20%

All self-catering guests qualify for special reduced prices at Beaуcliffes in Porth Veor Manor. Please refer to page 7 for details.



Check-in normally ready on arrival day from 4pm.



Disabled Clients are most welcome. However, please note that Porth Cottage is unsuitable for anyone with severe walking difficulties as the bedrooms and bathrooms are upstairs. If unsure please ask.

Porth Cottage 2018 standard tariff

Prices £ PER UNIT Any arrival day, subject to space. Minimum stay usually 3 nights.

2 bedroom cottage Max 4 persons

Duration	Per nt	3 nts	4 nts	7 nts
1 Jan - 28 Mar	125	375	375	500
29 Mar - 13 Apr	165	495	495	695
14 Apr - 24 May	140	420	420	630
25 May - 2 Jun	205	615	615	975
3 Jun - 22 Jun	165	495	495	765
23 Jun - 5 Jul	190	570	570	875
6 Jul - 19 Jul	220	660	660	995
20 Jul - 17 Aug	270	810	810	1350
18 Aug - 27 Aug	260	780	780	1300
28 Aug - 20 Sep	175	525	525	795
21 Sep - 18 Oct	140	420	420	630
19 Oct - 31 Oct	170	510	510	695
1 Nov - 22 Dec	125	375	375	500

Studio Annexe Max. 2 adults and 1 child Supplements £ PER UNIT, when booking the Studio Annexe as well as Porth Cottage.

Any date	20	60	60	90
----------	----	----	----	----



FREE nights. All prices shown above include a FREE night for min. stays of 4 nights and between 2-3 FREE nights for 7 night stays.



Christmas and New Year breaks

For other dates/durations - prices on request

Prices £ PER UNIT	23 Dec 4 nts	23 Dec 7 nts	27 Dec 3 nts	27 Dec 7 nts
2 bed cottage	420	560	290	560
Prices £ PER UNIT	30 Dec 3 nts	30 Dec 4 nts	30 Dec 7 nts	
2 bed cottage	420	420	490	



Mawgan Porth Apartments Mawgan Porth (awaiting grading – 4 star standard)

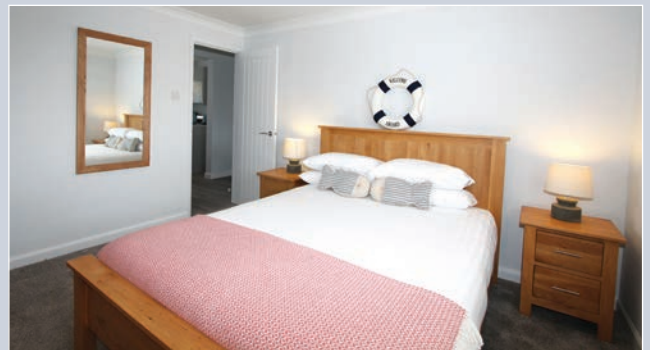
Open all year



These stunning coastal apartments were newly refurbished in summer 2017 and provide stylish contemporary accommodation.

Ideally located between Padstow and Newquay, Mawgan Porth has its own unique appeal and was named by 'The Times' as one of the top 10 holiday beaches in Cornwall.

Popular with avid walkers and families of all ages, this small hamlet has a good range of beach facilities including a selection of cafes, a bar, restaurant, convenience shop, 'pitch and putt' course and surf school.



There are five apartments offering from 1 to 3 bedrooomed accommodation situated in an elevated position just 480m walk down to the beach.

Most enjoy stunning valley and sea views whilst all the interiors are light and airy and designed with a beach house theme.





Disabled Clients are most welcome. However please note that the apartments are entirely unsuitable for those confined to a wheelchair or for anyone with severe walking difficulties. If unsure, please ask.



Dogs are very welcome in our two-bedroom rear view apartment, subject to advance booking (max 2) at £6 per dog per night. See page 47.

Excellent facilities

- » Open plan living room with TV and dining area
- » Well-equipped kitchen area with electric cooker and hob, microwave, dishwasher, fridge/freezer plus crockery and cutlery
- » Bathroom/s with shower and washbasin and toilet except 2 bed rear view with bath and overhead shower
- » All bedding, made up for your arrival, and all towels and tea towels provided
- » Full double glazing, central heating throughout
- » USB points in bedrooms and lounge
- » Patio or balcony with furniture
- » Free WiFi
- » One reserved parking space per apartment with two for the three bedroom sea view apartment

One bedroom sea view

- ▶ One double bedroom with TV
- ▶ Double sofa bed in the living room
- ▶ First floor with 11 steps to the building entrance and stairs to the first floor
- ▶ Balcony with valley and sea views
- ▶ Sleeps max 4 plus 1 infant

Two bedroom sea view

- ▶ One double and one twin, both with TV
- ▶ Stairs to the first floor apartment
- ▶ Balcony with valley and sea views
- ▶ Sleeps max 4 plus 1 infant

Two bedroom rear view

- ▶ One double and one twin, both with TV
- ▶ Ground floor apartment to rear of building, accessed via 11 steps and further steps to the entrance
- ▶ Rear patio with small garden
- ▶ Dog friendly
- ▶ Sleeps max 4 plus 1 infant

Three bedroom sea view

- ▶ One double with TV and en suite shower and wc
- ▶ One double with TV
- ▶ One twin with TV
- ▶ Ground floor but with 11 steps to the entrance
- ▶ Two patio areas with valley and sea views
- ▶ Sleeps max 6 plus 1 infant

Mawgan Porth Apartments 2018 standard tariff

Any arrival day, subject to space. Minimum stay usually 3 nights.

Prices £ PER UNIT	1 bedroom sea view Max 4 persons*				2 bedroom rear view Max 4 persons*			
Duration	Per nt	3 nts	4 nts	7 nts	Per nt	3 nts	4 nts	7 nts
1 Jan - 28 Mar	110	330	330	470	125	375	375	500
29 Mar - 13 Apr	145	435	435	650	165	495	495	695
14 Apr - 24 May	130	390	390	585	140	420	420	630
25 May - 2 Jun	175	525	525	840	205	615	615	975
3 Jun - 22 Jun	155	465	465	685	165	495	495	765
23 Jun - 5 Jul	165	495	495	785	190	570	570	875
6 Jul - 19 Jul	175	525	525	850	220	660	660	995
20 Jul - 17 Aug	195	585	585	940	270	810	810	1350
18 Aug - 27 Aug	185	555	555	900	260	780	780	1300
28 Aug - 20 Sep	155	465	465	685	175	525	525	795
21 Sep - 18 Oct	130	390	390	585	140	420	420	630
19 Oct - 31 Oct	145	435	435	640	170	510	510	695
1 Nov - 22 Dec	110	330	330	470	125	375	375	500

Supplements **£ PER UNIT** to be added to the above prices.

2 bedroom sea view	25	75	75	150
3 bedroom sea view	30	90	90	180

* Maximum capacity for all 1-bedroom units include a high quality double sofa bed in the lounge for two persons.



FREE nights. All prices shown above include a FREE night for minimum stays of 4 nights and between 2-3 FREE nights for 7 night stays.

Christmas and New Year breaks

For other dates/durations – prices on request

Prices £ PER UNIT	23 Dec 4 nts	23 Dec 7 nts	27 Dec 3 nts	27 Dec 7 nts	30 Dec 3 nts	30 Dec 4 nts	30 Dec 7 nts
1 bedroom sea view	345	550	245	550	345	345	480
2 bedroom apartment	420	560	290	560	420	420	490
2 bedroom sea view	495	710	365	710	495	495	640
3 bedroom sea view	510	740	380	740	510	510	670



SAVE MORE Come again in 2018 and save 20%. Please refer to page 6 for details.



Check-in normally ready on arrival day from 4pm.



White Lodge Apartments *Mawgan Porth*



White Lodge Mawgan Porth ★★★★★ Open all year



White Lodge is a small apartment complex with sea views and a sandy beach just 200 yards away down a private footpath – truly a coastal retreat for those seeking a relaxing holiday break.

Stunning clifftop scenery overlooks this superb bay just five miles from Newquay and nine miles from Padstow. Mawgan Porth beach faces west and is an ideal location for watersports. Walkers can enjoy spectacular views along the coastal path.

There is a selection of cafés, a bar, shop for basic essentials, a 'pitch and putt' course and a surf school.

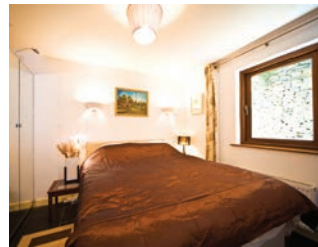


Beaucliffes | Restaurant

SAVE at least 20%

All self-catering guests qualify for special reduced prices at Beaucliffes in Porth Veor Manor.

Please refer to page 7 for details.



Excellent facilities

- » One bedroom apartment with a double bedroom
- » Two bedroom apartment with a double bedroom and one smaller bedroom with child bunk beds plus double sofa bed in the living room, FREE WiFi
- » Bathroom with large shower, wash basin & toilet
- » Lounge with tv & dining area
- » Well-equipped kitchen area with cooker and hob,
- » microwave, dishwasher, fridge and freezer
- » Utility room with washing machine/separate dryer in the 1 bed apartment only
- » washing machine only in the 2 bed apartment
- » Heated throughout
- » All bedding, made up for your arrival, and towels and tea towels provided
- » Sea view patio area with furniture
- » Allocated parking
- » Storage for surfboards, etc

White Lodge Apartments 2018 standard tariff

Prices £ PER UNIT Any arrival day, subject to space.
Minimum stay usually 3 nights.

Prices £ PER UNIT	1 bedroom sea view apartment <i>Max 2 adults & 1 infant</i>				2 bedroom sea view apartment <i>Max 4 adults*</i>			
	Per nt	3 nts	4 nts	7 nts	Per nt	3 nts	4 nts	7 nts
Duration								
1 Jan - 28 Mar	110	330	330	470	125	375	375	490
29 Mar - 13 Apr	145	435	435	650	165	495	495	725
14 Apr - 24 May	130	390	390	585	140	420	420	595
25 May - 2 Jun	175	525	525	840	200	600	600	975
3 Jun - 22 Jun	155	465	465	685	165	495	495	725
23 Jun - 5 Jul	165	495	495	785	175	525	525	795
6 Jul - 19 Jul	175	525	525	850	220	660	660	975
20 Jul - 17 Aug	195	585	585	940	280	840	840	1400
18 Aug - 27 Aug	185	555	555	900	270	810	810	1300
28 Aug - 20 Sep	155	465	465	685	175	525	525	725
21 Sep - 18 Oct	130	390	390	585	140	420	420	595
19 Oct - 31 Oct	145	435	435	640	175	525	525	725
1 Nov - 22 Dec	110	330	330	470	125	375	375	490

* Max 4 adults when making use of the double sofa bed, or max 2 adults and 2 children



FREE nights. All prices shown above include a FREE night for min. stays of 4 nights and between 2-3 FREE nights for 7 night stays.

Christmas and New Year breaks

For other dates/durations – prices on request

Prices £ PER UNIT	23 Dec 4 nts	23 Dec 7 nts	27 Dec 3 nts	27 Dec 7 nts	30 Dec 3 nts	30 Dec 4 nts	30 Dec 7 nts
1 bedroom sea view	345	550	245	550	345	345	480
2 bedroom sea view	420	560	290	560	420	420	490



Check-in normally ready on arrival day from 4pm.

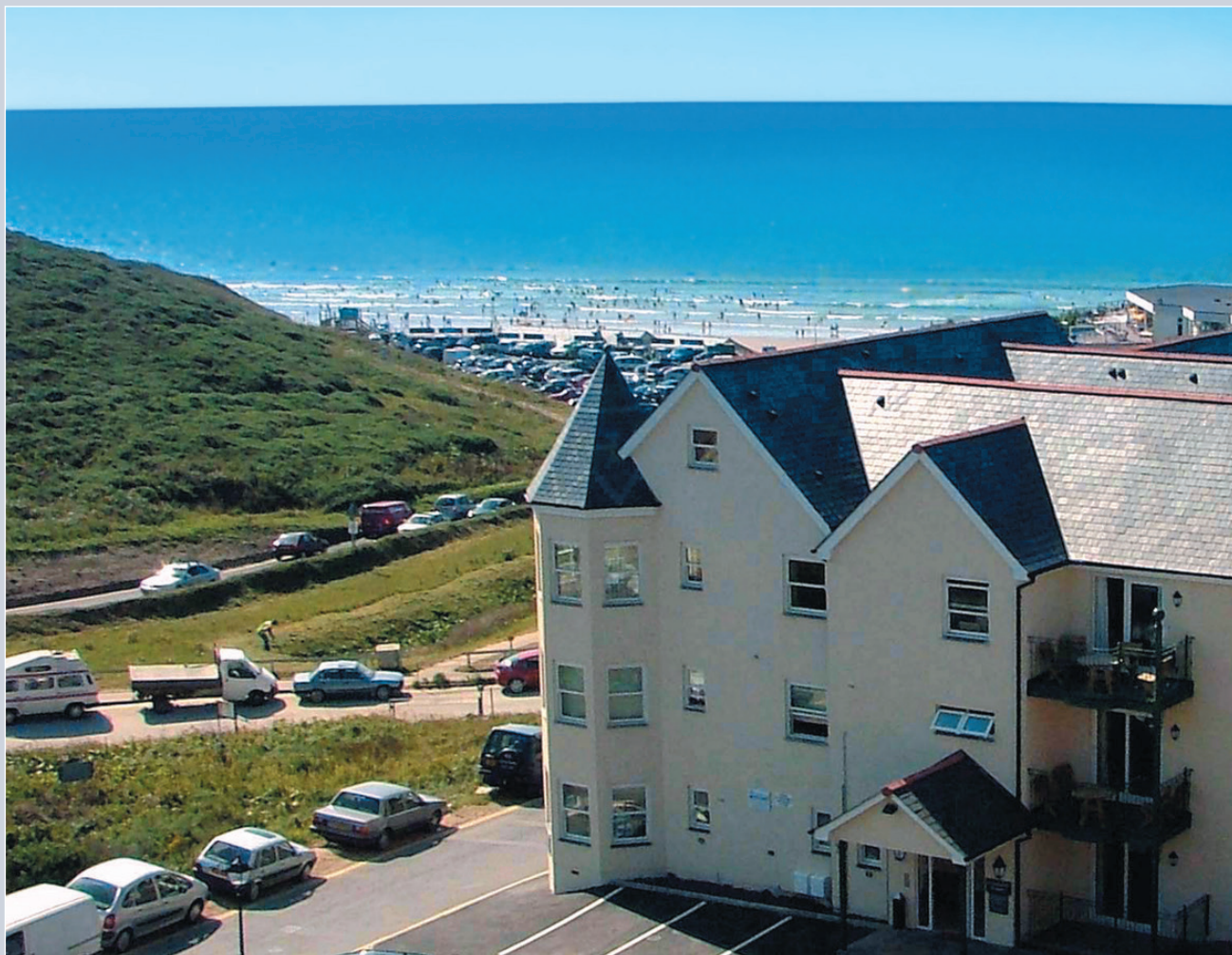


Disabled Clients are most welcome. There is a ground floor apartment but it is entirely unsuitable for those confined to a wheelchair. If you are unsure please ask.



SAVE MORE Come again in 2018 and save 20%. Please refer to page 6 for details.

Beachcombers Apartments *Watergate Bay*



Beachcombers Watergate Bay ★★★★★ Open all year



Located just two hundred yards from the mile long sandy beach of Watergate Bay, this superb complex features a choice of attractive one or two bedroom apartments, plus penthouses, all with patio or balcony, and many with sea view.

Amenities include a reception area which usually stocks milk and some basic essentials. There is also a laundry facility (payable by tokens).



Guests are most welcome to use the facilities at Porth Veor Manor Hotel in the neighbouring resort of Porth. These include a bar, superb restaurant and heated swimming pool.

Excellent facilities

- ▶▶ Each one bedroom apartment has a twin bedroom with en suite toilet, satellite tv plus a separate bathroom (with shower)
- ▶▶ Each two bedroom apartment has a twin and double bedroom and two bathrooms (with shower), one en suite. Both bedrooms have satellite tv (except one apartment in master bedroom only)
- ▶▶ Lounge/diner with tv and a double sofa bed
- ▶▶ Well equipped kitchen area with cooker, microwave, dishwasher, fridge with freezer compartment, iron and board, plus a wide range of utensils, crockery and cutlery
- ▶▶ All bedding made up for your arrival, and all towels and tea towels provided
- ▶▶ Underfloor heating throughout
- ▶▶ Reserved, private parking – one space per apartment. Additional parking available at the public car park opposite (charges payable direct)
- ▶▶ Lift serves some apartments
- ▶▶ Secure lockers and storage area for surfboards, golf clubs, plus shower, wc
- ▶▶ Some ground floor apartments, one with some disabled-friendly features

Stylish penthouses too ...

- ▶▶ These duplex apartments have all the facilities of standard two bedroom units but are much larger and all served by a lift
- ▶▶ Added benefit of special touches including one with air conditioning throughout and superior kitchen with separate freezer. In the master bedroom upstairs there is a gallery window and the en suite is with bath



Beachcombers Apartments *Watergate Bay*



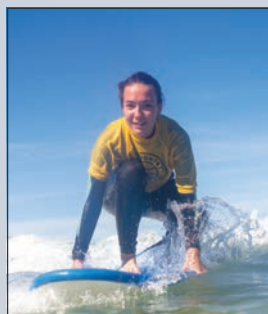
SAVE MORE Come again in 2018 and save 20%. Please refer to page 6 for details.



Check-in normally ready on arrival day from 4pm.



Disabled Clients are welcome. There are 2 ground floor apartments, both with easy level access from the main car park, 1 of which has some disabled friendly features including a wetroom. There are also 3 ground floor units albeit with a longer distance from the car park, plus a few 1st and 2nd floor apartments served by a lift. If unsure, please ask.



Learn to Surf with Westcountry Surf School based at Watergate Bay

Personal and professional tuition from experienced coaches with all ages and abilities catered for – special packages available.

www.breaksincornwall.com/surfing-breaks-in-cornwall/

Beaucliffes | Restaurant

SAVE at least 20%

All self-catering guests qualify for special reduced prices at Beaucliffes in Porth Veor Manor.

Please refer to page 7 for details.

Beachcombers Apartments 2018 standard tariff

Any arrival day, subject to space. Minimum stay usually 3 nights.

Prices £ PER UNIT	1 bedroom Max 4 persons*				2 bedroom Max 6 persons*			
Duration	Per nt	3 nts	4 nts	7 nts	Per nt	3 nts	4 nts	7 nts
1 Jan - 28 Mar	95	285	285	380	125	375	375	500
29 Mar - 13 Apr	130	390	390	560	165	495	495	695
14 Apr - 24 May	115	345	345	495	140	420	420	630
25 May - 2 Jun	160	480	480	750	205	615	615	975
3 Jun - 22 Jun	140	420	420	595	165	495	495	765
23 Jun - 5 Jul	150	450	450	695	190	570	570	875
6 Jul - 19 Jul	160	480	480	760	220	660	660	995
20 Jul - 17 Aug	180	540	540	850	270	810	810	1350
18 Aug - 27 Aug	170	510	510	810	260	780	780	1300
28 Aug - 20 Sep	140	420	420	595	175	525	525	795
21 Sep - 18 Oct	115	345	345	495	140	420	420	630
19 Oct - 31 Oct	130	390	390	550	170	510	510	695
1 Nov - 22 Dec	95	285	285	380	125	375	375	500

Supplements £ PER UNIT to be added to above prices

Sea view	15	45	45	90	25	75	75	150
Penthouse	-	-	-	-	20	60	60	120
3 bed sea view	-	-	-	-	30	90	90	180
Penthouse sea view	-	-	-	-	45	135	135	270

* Max. capacities for all units include a high quality double sofa bed in the lounge.



FREE nights. All prices shown above include a FREE night for minimum stays of 4 nights and between 2-3 FREE nights for 7 night stays.

Christmas and New Year breaks

For other dates/durations – prices on request

Prices £ PER UNIT	23 Dec 4 nts	23 Dec 7 nts	27 Dec 3 nts	27 Dec 7 nts	30 Dec 3 nts	30 Dec 4 nts	30 Dec 7 nts
1 bedroom apartment	300	460	200	460	300	300	390
1 bedroom sea view	345	550	245	550	345	345	480
2 bedroom	420	560	290	560	420	420	490
2 bedroom sea view	495	710	365	710	495	495	640
3 bedroom sea view	510	740	380	740	510	510	670
Penthouse	480	680	350	680	405	405	600
Penthouse sea view	555	830	425	830	555	555	750

Waves Apartments *Watergate Bay*



Waves Watergate Bay ★★★★★ Open all year



Apt 21



We have two modern stylish one bedroom properties in this contemporary apartment complex that enjoy a stunning location 100 yards from the beach.

Apartment 21 (4 star gold) is on the 3rd floor with balcony and superb sea views. The bedroom has a kingsize double bed with sea view.

Apartment 14 is dog friendly, on the 2nd floor at the rear of the complex with a decked patio and the bedroom has twin beds.



Disabled Clients are most welcome. However please note that these properties are entirely unsuitable for those confined to a wheelchair – although a lift serves all floors. If unsure, please ask.



Dogs are very welcome in Apartment 14 only, subject to advance booking (max 2) at £6 per dog per night. See page 47.



Waves Apartments 2018 standard tariff


Any arrival day, subject to space.
Minimum stay usually 3 nights.

Prices £ PER UNIT	1 bedroom Max 4 persons*			
Duration	Per nt	3 nts	4 nts	7 nts
1 Jan - 28 Mar	95	285	285	380
29 Mar - 13 Apr	130	390	390	560
14 Apr - 24 May	115	345	345	495
25 May - 2 Jun	160	480	480	750
3 Jun - 22 Jun	140	420	420	595
23 Jun - 5 Jul	150	450	450	695
6 Jul - 19 Jul	160	480	480	760
20 Jul - 17 Aug	180	540	540	850
18 Aug - 27 Aug	170	510	510	810
28 Aug - 20 Sep	140	420	420	595
21 Sep - 18 Oct	115	345	345	495
19 Oct - 31 Oct	130	390	390	550
1 Nov - 22 Dec	95	285	285	380

Supplements £ PER UNIT

Sea view	15	45	45	90
----------	-----------	-----------	-----------	-----------

* Max. capacities include a high quality double sofa bed in the lounge.

 **FREE nights.** All prices shown above include a FREE night for min. stays of 4 nights and between 2-3 FREE nights for 7 night stays.

Excellent facilities

- » Each unit has a bathroom with bath and overhead shower
- » Living room with tv and a double sofa bed
- » Well-equipped kitchen area with electric cooker and hob, microwave, dishwasher, washing machine, fridge/freezer (Apartment 21 has a separate freezer and breakfast bar, Apartment 14 has dining area in the living room) and a wide range of crockery and cutlery
- » All bedding made up for your arrival and all towels and tea towels provided
- » Full central heating
- » Lift
- » Reserved parking (Apartment 21 has covered area), storage cage for surfboards etc

Beaucliffes | Restaurant

SAVE at least 20%

All self-catering guests qualify for special reduced prices at Beaucliffes in Porth Veor Manor.
Please refer to page 7 for details.

Christmas and New Year breaks

For other dates/durations – prices on request

Prices £ PER UNIT	23 Dec 4 nts	23 Dec 7 nts	27 Dec 3 nts	27 Dec 7 nts	30 Dec 3 nts	30 Dec 4 nts	30 Dec 7 nts
1 bedroom apartment	300	460	200	460	300	300	390
1 bedroom sea view	345	550	245	550	345	345	480



SAVE MORE Come again in 2018 and save 20%.
Please refer to page 6 for details.



Check-in normally ready on arrival day from 4pm.

Tregurrian Villas *Watergate Bay*



Tregurrian Villas Watergate Bay ★★★★★ Open all year



This select development of three well appointed villas is located approximately one hundred yards from the beach at Watergate Bay.

Each unit has two ground floor bedrooms with a lounge and kitchen/diner upstairs.

Beaucliffes | Restaurant

SAVE at least 20%

All self-catering guests qualify for special reduced prices at Beaucliffes in Porth Veor Manor.
Please refer to page 7 for details.



SAVE MORE Come again in 2018 and save 20%.
Please refer to page 6 for details.



Check-in normally ready on arrival day from 4pm.



Excellent facilities

- » Each villa has two bedrooms (one double, one twin) plus a bathroom with shower and toilet
- » Separate toilet
- » Lounge with tv and a double sofa bed
- » Separate well-equipped kitchen and dining area with cooker, microwave, dishwasher, fridge with freezer

compartment, washing machine, dryer, iron and board, plus utensils, crockery and cutlery

- » All bedding made up for your arrival and all towels and tea towels provided
- » Full central heating
- » Reserved private parking



Dogs are very welcome in 2 of our Tregurrian villas, subject to advance booking (max 2) at £6 per dog per night. See page 47.

Tregurrian Villas 2018 standard tariff

**Any arrival day, subject to space.
Minimum stay usually 3 nights.**

Prices £ PER UNIT	2 bedroom villa Max 6 persons*			
Duration	Per nt	3 nts	4 nts	7 nts
1 Jan - 28 Mar	125	375	375	500
29 Mar - 13 Apr	165	495	495	695
14 Apr - 24 May	140	420	420	630
25 May - 2 Jun	205	615	615	975
3 Jun - 22 Jun	165	495	495	765
23 Jun - 5 Jul	190	570	570	875
6 Jul - 19 Jul	220	660	660	995
20 Jul - 17 Aug	270	810	810	1350
18 Aug - 27 Aug	260	780	780	1300
28 Aug - 20 Sep	175	525	525	795
21 Sep - 18 Oct	140	420	420	630
19 Oct - 31 Oct	170	510	510	695
1 Nov - 22 Dec	125	375	375	500

* Max. capacities for all units include a high quality double sofa bed in the lounge.



FREE nights. All prices shown above include a FREE night for min. stays of 4 nights and between 2-3 FREE nights for 7 night stays.

Christmas and New Year breaks

For other dates/durations - prices on request

Prices £ PER UNIT	23 Dec 4 nts	23 Dec 7 nts	27 Dec 3 nts	27 Dec 7 nts
2 bedroom	420	560	290	560
Prices £ PER UNIT	30 Dec 3 nts	30 Dec 4 nts	30 Dec 7 nts	
2 bedroom	420	420	490	

Bay Retreat Villas *St Merryn Park, near Padstow*



Bay Retreat Villas St Merryn Park ★★★★★

Open all year



This purpose built development of twenty eight contemporary holiday villas is set within St Merryn Park located on the outskirts of St Merryn, just four miles from Padstow.

There is a bar/restaurant, shop, tennis courts and recreation area including a defined area for dogs. St Merryn is two miles away and has a range of shops covering all basic essentials, restaurants and pubs, including Rick Stein's 'Cornish Arms'.



Padstow is well-known for its busy fishing harbour and Rick Stein's famous restaurants. Across the estuary is Rock, the magnificent sands of Daymer and a little further, Polzeath.

There are seven bays all within easy reach from Bay Retreat with the nearest, Porthcothan, just two miles away whilst the superb sands of Constantine Bay and Harlyn are three miles. Just a short drive south along the coast is Bedruthan Steps, Watergate Bay and Newquay.

Bay Retreat Villas provide modern living with a high standard of comfort throughout. Each property has two bedrooms on the first floor and on the ground floor there's a kitchen and lounge/diner leading onto a private garden area.

Images

Clockwise from top left: Padstow, Rockpooling at Seaton, Rick Stein's Fish & Chips, Bedruthan Steps, Bodyboarding

Bay Retreat Villas *St Merryn, near Padstow*



Excellent facilities

- ▶▶ 2 bedroom villas, one double with Juliet balcony and tv and one twin
- ▶▶ Bathroom with bath plus shower attachment with shower screen and toilet
- ▶▶ Separate ground floor toilet
- ▶▶ Lounge/diner with tv and double sofa bed
- ▶▶ Well equipped kitchen area with microwave, electric oven and hob, dishwasher, washing machine, fridge and separate freezer, iron and board plus a wide range of kitchen utensils, crockery and cutlery
- ▶▶ All bedding, made up for your arrival and all towels/tea towels provided
- ▶▶ Centrally heated throughout
- ▶▶ Small private garden with picnic bench and gravelled area or lawned area with terrace
- ▶▶ Reserved private parking outside the villa
- ▶▶ Landscaped amenity area with overflow parking and cycle parking spaces
- ▶▶ FREE WIFI



Bay Retreat Villas 2018 standard tariff

**Any arrival day, subject to space.
Minimum stay usually 3 nights.**

Prices £ PER UNIT	2 bedroom Max 6 persons*			
Duration	Per nt	3 nts	4 nts	7 nts
1 Jan - 28 Mar	125	375	375	500
29 Mar - 13 Apr	165	495	495	695
14 Apr - 24 May	140	420	420	630
25 May - 2 Jun	205	615	615	975
3 Jun - 22 Jun	165	495	495	765
23 Jun - 5 Jul	190	570	570	875
6 Jul - 19 Jul	220	660	660	995
20 Jul - 17 Aug	265	795	795	1325
18 Aug - 27 Aug	255	765	765	1275
28 Aug - 20 Sep	170	510	510	795
21 Sep - 18 Oct	140	420	420	630
19 Oct - 31 Oct	170	510	510	695
1 Nov - 22 Dec	125	375	375	500

* Max. capacities for all units include a high quality double sofa bed in the lounge.



FREE nights. All prices shown above include a FREE night for min. stays of 4 nights and between 2-3 FREE nights for 7 night stays.

Christmas and New Year breaks

For other dates/durations – prices on request

Prices £ PER UNIT	23 Dec 4 nts	23 Dec 7 nts	27 Dec 3 nts	27 Dec 7 nts
2 bedroom	420	560	290	560
Prices £ PER UNIT	30 Dec 3 nts	30 Dec 4 nts	30 Dec 7 nts	
2 bedroom	420	420	490	



Disabled Clients are most welcome. However, please note that these villas are entirely unsuitable for those confined to a wheelchair or for anyone with severe walking difficulties. If unsure please ask.



SAVE MORE Come again in 2018 and save 20%. Please refer to page 6 for details.



Check-in normally ready on arrival day from 4pm.

Beaucliffes | Restaurant

SAVE at least 20%

All self-catering guests qualify for special reduced prices at Beaucliffes in Porth Veor Manor.

Please refer to page 7 for details.



Dogs are very welcome in 10 of our villas, subject to advance booking (max 2) at £6 per dog per night. See page 47.

Green Acres Cottages *Penpillick, near Fowey*



Green Acres Cottages Penpillick ★★★★★ Open all year



Enjoying an elevated position with outstanding views across Luxulyan Woods and Tywardreath Village with patchwork fields reaching down to the sea.

Green Acres provides a delightful rural retreat far from the madding crowd and just three miles from the famous Eden Project – the wonderful global garden – and the charming 1000 year old stannary town of Lostwithiel.

Close to St Austell Bay, Green Acres enjoys views spanning from Chapel Point, Mevagissey to Gribben Head with its famous daymark on the approach to Fowey.



Green Acres Cottages are just 3 miles from Par Beach and 4 miles from Polkerris with its watersports ranging from windsurfing and sailing to kayaking and paddle surfing.

It's also just 5 miles from the picturesque waterfront at Fowey with its stylish yachts and brightly coloured fishing boats and small beach at Readymoney Cove.

Looe and Polperro are nearby and Green Acres is also a well placed venue for many varied country and coastal path walks. Follow the Camel Trail from nearby Bodmin to Padstow by cycle or simply unwind in the relaxed atmosphere of Green Acres.

Images

Clockwise from top left:
Kayaking,
Fowey,
Flowers at the
Eden Project

Green Acres Cottages *Penpillick, near Fowey*



This superb complex of just ten award winning Cornish stone-faced cottages, is set in around two acres and surrounded by stunning views of the countryside.

There is an indoor heated swimming pool with changing room plus shower and toilet and there is also a coin-operated laundry facility.

Most of the grounds are laid to lawn with a barbecue area for communal use in addition to some cottages with their own brick built facility. A small children's outside play area is located alongside the pool complex.

Beaucliffes | Restaurant

SAVE at least 20%

All self-catering guests qualify for special reduced prices at Beaucliffes in Porth Veor Manor.

Please refer to page 7 for details.



SAVE MORE Come again in 2018 and save 20%.
Please refer to page 6 for details.



Disabled Clients are most welcome. Whilst unsuitable for those confined to a wheelchair most cottages have level access from the car park and if stairs are a problem, most have a ground floor shower and toilet and level access to the patio. If unsure please ask.



Green Acres Cottages 2018 standard tariff

Prices £ PER UNIT Any arrival day, subject to space. Minimum stay usually 3 nights.

2 bedroom cottage Max 6 persons*

Duration	Per nt	3 nts	4 nts	7 nts
1 Jan - 28 Mar	125	375	375	500
29 Mar - 13 Apr	165	495	495	695
14 Apr - 24 May	140	420	420	630
25 May - 2 Jun	205	615	615	975
3 Jun - 22 Jun	165	495	495	765
23 Jun - 5 Jul	190	570	570	875
6 Jul - 19 Jul	220	660	660	995
20 Jul - 17 Aug	270	810	810	1350
18 Aug - 27 Aug	260	780	780	1300
28 Aug - 20 Sep	175	525	525	795
21 Sep - 18 Oct	140	420	420	630
19 Oct - 31 Oct	170	510	510	695
1 Nov - 22 Dec	125	375	375	500

* Max. capacities for all units include a high quality double sofa bed in the lounge.



FREE nights. All prices shown above include a FREE night for min. stays of 4 nights and between 2-3 FREE nights for 7 night stays.

Excellent facilities

- » Each spacious cottage has 2 bedrooms, one double (mostly en suite) and one twin, both with tv
- » 2 or 3 bathrooms with bath or shower
- » Lounge/diner with tv and a double sofa bed
- » Well-equipped kitchen area with cooker, microwave, dishwasher, fridge and separate freezer, iron and board plus a wide range of crockery, cutlery and utensils
- » All bedding, made up for your arrival, and all towels and tea towels provided
- » Full double glazing, central heating throughout, plus a wood burner in the lounge
- » Patio or verandah with garden furniture, some with barbeque
- » Reserved private parking
- » Free WiFi



Christmas and New Year breaks

For other dates/durations – prices on request

Prices £ PER UNIT	23 Dec 4 nts	23 Dec 7 nts	27 Dec 3 nts	27 Dec 7 nts	30 Dec 3 nts	30 Dec 4 nts	30 Dec 7 nts
2 bedroom villa	420	560	290	560	420	420	490



Check-in normally ready on arrival day from 4pm.



Dogs are very welcome in 3 of our cottages, subject to advance booking (max 2) at £6 per dog per night. See page 47.

Juliots Well Cottages *Camelford*



Juliots Well Cottages Camelford ★★★★★ Open all year.



Free from
1 March
2018

A delightful rural retreat nestling between moors and the spectacular north coast.

Juliots Well Cottages are situated just four miles from Trebarwith Strand Beach and a mile from the ancient town of Camelford. Within easy reach are the popular coastal villages of Tintagel, Boscastle and Port Isaac.

Bowood Golf Course is only 200 yards from the cottages down a country lane where non-members are most welcome

whether to play a round or two of golf or make use of the bar and restaurant facilities.

We have a select development of just five two-bedroom stone-built cottages with a high specification throughout.



Juliets Well Cottages 2018 standard tariff

Prices £ PER UNIT Any arrival day, subject to space. Minimum stay usually 2 nights.

2 bedroom cottage Max 4 persons

Duration	Per nt	3 nts	4 nts	7 nts
1 Jan - 28 Mar	90	270	270	400
29 Mar - 13 Apr	105	315	315	525
14 Apr - 24 May	95	285	285	450
25 May - 2 Jun	160	480	480	750
3 Jun - 22 Jun	125	375	375	600
23 Jun - 5 Jul	160	480	480	720
6 Jul - 19 Jul	170	510	510	825
20 Jul - 17 Aug	180	540	540	900
18 Aug - 27 Aug	170	510	510	850
28 Aug - 20 Sep	125	375	375	600
21 Sep - 18 Oct	90	270	270	400
19 Oct - 31 Oct	105	315	315	525
1 Nov - 22 Dec	90	270	270	400



FREE nights. All prices shown above include a FREE night for min. stays of 4 nights and between 2-3 FREE nights for 7 night stays.

Excellent facilities

- » 2 bedrooms (1 double, 1 twin) and a bathroom with shower, wash basin, toilet, hair dryer and shaver point
- » Separate downstairs cloakroom with toilet and washbasin
- » Lounge with tv and selected satellite channels and a log burner
- » Well equipped kitchen and dining area with cooker, microwave, dishwasher, fridge with freezer compartment, washer dryer, iron and board – plus a wide range of utensils
- » All beds made up for your arrival and all towels/tea towels included
- » All electricity and heating included
- » Private parking
- » Private enclosed patio garden

Christmas and New Year breaks

For other dates/durations – prices on request

Prices £ PER UNIT	23 Dec 4 nts	23 Dec 7 nts	27 Dec 3 nts	27 Dec 7 nts	30 Dec 3 nts	30 Dec 4 nts	30 Dec 7 nts
2 bed cottage	290	390	220	390	360	360	390



SAVE MORE Come again in 2018 and save 20%. Please refer to page 6 for details.



Check-in normally ready on arrival day from 4pm.



Disabled Clients are most welcome. However please note that the cottages are entirely unsuitable for those confined to a wheelchair or for anyone with severe walking difficulties. If unsure, please ask.



Dogs are very welcome in 3 of our cottages, subject to advance booking (max 2) at £6 per dog per night. See page 47.



General information and booking conditions 2018

Arrival days and durations

Any, unless otherwise stated, subject of course to space. Self catering usually minimum 3 nights.

Holiday costs

All prices include VAT where applicable.

Standard tariff for all properties. If your holiday duration cuts across two price bands the applicable rates are combined on a pro rata basis.

HOTEL: All accommodation prices are quoted per room inclusive of breakfast (or room only if stated). **NB** special dinner prices only valid when booked in advance for full holiday duration. Child offers quoted per child when sharing room with two adults.

APARTMENTS, VILLAS & COTTAGES: **Standard tariff** All prices are quoted **per unit**. Where Porth Veor Villas/Apts booked with breakfast/ dinner in advance, all meals quoted **per person**.

Group bookings

Groups are most welcome, special prices on request. NB in certain circumstances all-male/ female groups may not be accepted or, may be subject to an additional loss/damage deposit. Please check when booking.

Reservations

Simply contact us to check availability or where applicable you can book online. Early booking is advisable, especially for peak dates or where there are specific requirements.

Money matters

Unless booking a non-refundable tariff such as an Advance Purchase or other special offer that requires full payment at the time of booking, a non-refundable deposit of £150 **per room/unit** (£75 for single rooms,) **per week or part week**, is payable. Full payment please if booking is made within one calendar month of arrival.

A full confirmation and account will then be sent confirming our contract with you. Please note in respect of the vast majority of our featured self catering properties these are privately owned and we act as agents only for those owners and are not principals.

Further details can be supplied on request. Balances required one calendar month prior to arrival. No further reminder will be sent

and bookings may be cancelled if payment is not received by the due date and any deposit paid will be forfeit. Providing you have booked a package that allows cancellations, should you have to cancel your holiday the following charges apply: 28 days or more before your arrival date loss of deposit, 27-15 days 50% of your total holiday cost or loss of deposit, whichever is greater, 14 days or less 100%.

Cancellation insurance is therefore strongly recommended.

NB: free night offers must be taken at the time of booking and cannot be added retrospectively.

Amendments – should you wish to alter your arrangements after we have processed your booking a £30 per room/property amendment fee will be charged. However, if within 28 days higher charges may apply especially if your arrival date is changed. Any monies paid to your agent is held on behalf of Travelsmith Holidays Ltd. Cheques made payable to Travelsmith Holidays Ltd.

Security Deposit/Pre-Authorisation

Self Catering: Porth Veor Villas & Apartments, Porth Cottage & Studio Annexe, The Beach House – guests will be required to provide a credit/debit card pre-authorisation on arrival. In respect of all other self catering properties a £100 security deposit will be added to the total holiday invoice payable at the time of balance. This will be cancelled/fully refunded after departure, subject to any deduction for breakages, loss and/or damage and/or if the unit is left in an unacceptable condition.

Hotel Pre-Authorisation: Porth Veor Manor Hotel – guests may be required to provide a credit/debit card pre-authorisation on arrival. This will be released by your bank, normally within 10 working days from check-in, subject to deduction for food, beverages and extras charged to the room and/or damage and/or if the room is left in an unacceptable condition.

Liability is not limited to the initial £100 security deposit or pre-authorisation and in the event of additional charges/loss/damage in excess of this figure, we would seek further payment from the credit/ debit card supplied at the time of booking or require supplementary payment by

cheque or credit/debit card.

In addition charges may apply where through unacceptable behaviour disruption and severe inconvenience is caused to fellow guests.

NB: please check your property on arrival and if you find any significant damage to any contents/ furnishings please advise us at once to avoid charges being incurred on your departure.

Accommodation and meals

No allowance for unused accommodation/ meals not taken due to absence, including late arrival first day or early departure on last day.

Room types (applicable to all accommodation)

Double = 1 large bed. Twin = 2 single beds. Family Room = double or twin with bunk beds. Where sofa beds used in self catering in line with max capacities they are always a double bed unless otherwise specified.

Requests We are happy to accept requests for specific rooms and or apartments/villas/ cottages and will do our best but we regret we cannot guarantee such requests.

Special diets at Porth Veor Manor

Vegetarian dishes are available daily. However depending on specific dietary requirements there may be a restricted menu. It is important that prior notice is given so that we may assist wherever possible. **NB Allergies:** If you or any member of your party have any type of food allergy it is vitally important that you advise us on arrival at the hotel and also notify the waiting staff at the time of order.

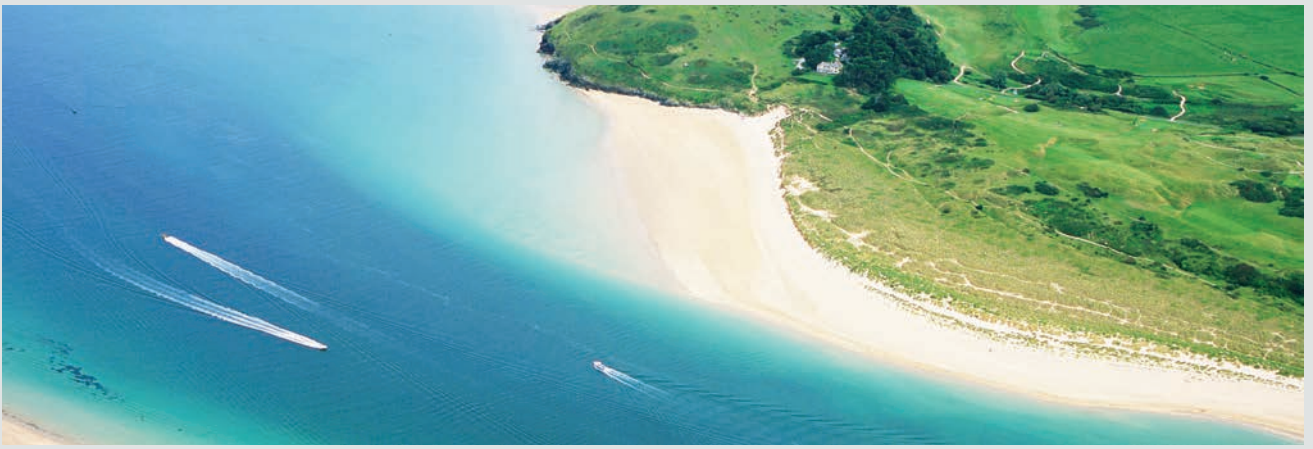
Check in/check out

Normally your accommodation will be ready on arrival day between 3-4pm – please refer to individual properties. On departure please vacate by 10am so that we can service it in good time prior to new arrivals. Late departures will be subject to a supplementary charge.

Late arrivals

Check in is up to 9pm (10.30pm for Porth Veor Manor). Should you be arriving later due to a delayed flight or any other travel problem please call Porth Veor Manor, our Cornwall Reservations Centre, on 01637 873274 in advance with your estimated time of arrival.

NB: Where reception is not manned all day or is closed there is also an 'outside safe' system for collection of keys and important



arrival information, details provided with your confirmation and account.

If accommodation is not taken up, without prior notification by 9am on the day immediately after your scheduled arrival day, the Management reserves the right to re-let the accommodation.

Cots and high chairs

Provided (excl bedding) free of charge, subject to advance booking only, at all our featured properties. NB: We are unable to supply stairgates.

Disabled clients

Most welcome and we will be pleased to assist wherever possible. However, please note the majority of our accommodation is entirely unsuitable for those wheelchair-bound or with severe walking difficulties. Please refer to individual property pages for specific information and do not hesitate to seek advice from us when booking. It is vital that you supply full details of any disability when booking and if necessary, confirm in writing. **NB:** No lift available in any property unless otherwise stated.

Swimming pools

Please note that they may be subject to closure or restricted use in line with any safety requirements which may be imposed by local authorities at any time, or for any other operational, health or safety reasons. **NB:** It is a condition of use that all guests fully comply with safety instructions.

Porth Veor Manor Subject to weather conditions our heated outdoor pool is open Apr-Oct and is available to any guests from our other properties. Please advise reception on arrival before use.

Green Acres Heated indoor pool open all year round.

Laundry facilities

Laundry facilities are at Beachcombers (payable by tokens from reception), Green Acres (coin operated) and Mawgan Porth Apartments. In addition, we offer a full laundry service to all hotel and self catering guests at all our featured properties except Green Acres, Bay Retreat, Juliots Well and White Lodge.

Bed linen and towels

Bed linen, towels and tea towels are provided in

all units for internal use only. Beach towels can be obtained from reception at Beachcombers, Tregurrian, Waves and pool towels Porth Veor Manor only.

WiFi

Any free WiFi services at the properties advertised in this brochure are provided on an "as is" basis. We do not warrant that the service is fault free or fit for any particular purpose, or that our system is secure. Guests must assume all responsibility and risk for use of the service. Furthermore, we cannot be held responsible should the service be interrupted, limited or curtailed due to maintenance and repair work, transmission or equipment limitations/failures or due to an emergency.

Parking

All our featured properties have their own private car park. With specific reference to the Beachcombers & Waves there is one guaranteed space for each apartment. Where clients bring two cars for one apartment there is insufficient space in our private car park, but there is a public car park opposite the complex (payable locally). With regard to Mawgan Porth Apartments there is also some off-road parking opposite the complex.

Dress code at Beaucliffes, Porth Veor Manor

We would respectfully ask that smart casual wear is worn for dinner. Thank you for your co-operation.

Smoking

Not permitted inside any of our properties.

Conduct

The Management reserves the right to decline acceptance of any booking and to expel anyone whose conduct is deemed to be detrimental to the applicable property and the comfort of all other guests. We are sure this ruling can only prove beneficial for the vast majority of clients.

Pets

Dogs are welcome in selected properties where stated, charged at £6 per dog per night and subject to compliance with site rules, supplied on arrival. If unsure, please ask when booking. With the exception of registered guide/service dogs (welcome free of charge) we regret that pets cannot be accepted at Beachcombers, White Lodge, Porth Veor, Porth Cottage & the

Studio Annexe. It is also not permitted to leave pets in your vehicle in our car parks overnight.

NB Pet Allergies: As some of our self catering venues accept dogs it is vitally important that at the time of booking you advise us if you or any member of your party have a dog hair allergy. Please ensure that if applicable, this information has been detailed by us on your confirmation and if not, please seek such written confirmation.

Brochure information

All details have been compiled as carefully as possible to ensure accuracy at the time of publication. If any material changes subsequently occur, we will notify you accordingly.

Our liability

We accept full responsibility for ensuring that the accommodation provided is in accordance with the descriptions in this brochure. No liability is accepted for any accidental injury to any guest nor for any loss or damage to their property including vehicles, however caused. We reserve the right to amend or withdraw any amenity or facility due to operational or safety reasons. Every effort will be made to restore any such loss of facility with a minimum of delay. If any advertised facility is withdrawn or unavailable we will notify you in advance where possible.

Assistance, problems, complaints

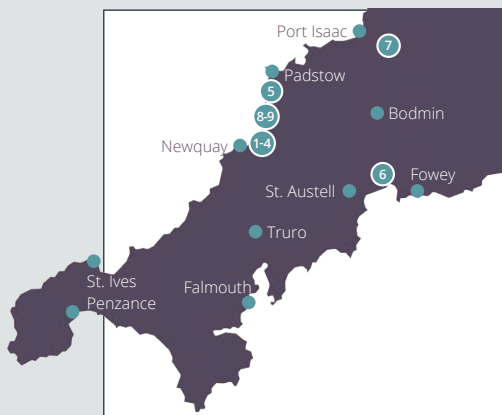
We do our utmost to ensure that all holiday arrangements are at the highest possible standards and are in accordance with what we have contracted to supply. However, if you have a problem during your holiday, please inform the management at once so that every opportunity is given to restore holiday satisfaction. For obvious reasons it is always difficult to resolve any problems on a retrospective basis.

At your service

If you have any queries or require further information please do not hesitate to ask. All our holiday properties are owned and/or managed by Travelsmith Holidays Ltd.

VAT reg – 732 2215 74.

NB. All properties are entirely non smoking in all internal areas.



1 Beachcombers Apartments & Waves

Watergate Bay, Cornwall TR8 4AB
www.watergatebay.com
 email: beachcombers@watergatebay.com
 Tel: (01637) 839542

2 Tregurrian Villas

Watergate Bay, Cornwall TR8 4AB
www.watergatebay.com
 email: tregurrian@watergatebay.com
 Tel: (01637) 839541

3 Porth Veor Manor Hotel, Villas & Apartments, Porth Cottage

Porth Way, Porth, Cornwall TR7 3LW
www.porthveormanor.com
 email: sales@porthveormanor.com
 Tel: (01637) 873274

4 The Beach House

Beach Road, Porth, Cornwall TR7 3NE
www.porthveormanor.com
 email: sales@porthveormanor.com
 Tel: (01637) 873274

5 Bay Retreat Villas

St Merryn Park, St Merryn,
 Near Padstow, Cornwall PL28 8QA
www.bayretreatvillas.co.uk
 email: sales@bayretreatvillas.co.uk
 Tel: (01637) 839545

6 Green Acres Cottages

Penpillick, Par, Cornwall PL24 2RU
www.greenacrescottages.co.uk
 email: sales@greenacrescottages.co.uk
 Tel: (01637) 839544

7 Juliots Well Cottages

Camelford, North Cornwall PL32 9RF
www.breaksincornwall.com
 email: juliotswell@breaksincornwall.com
 Tel: (01637) 873274

8 White Lodge Apartments

Mawgan Porth, North Cornwall TR8 4BN
www.breaksincornwall.com
 email: whitelodge@breaksincornwall.com
 Tel: (01637) 873274

9 Mawgan Porth Apartments

Tredragon Road, Mawgan Porth, North Cornwall TR8 4BW
www.breaksincornwall.com
 email: mawganporth@breaksincornwall.com
 Tel: (01637) 873274

All correspondence including payments to:
Travelsmith Holidays Ltd at Porth Veor Manor (our central reservations office) or head office.

Head Office:

Travelsmith Holidays Ltd, 38 High Street,
 Burnham-on-Crouch, Essex CM0 8AA
 Tel: (01621) 787704
 email: sales@travelsmith.co.uk
www.breaksincornwall.com

Owned and/or operated by Travelsmith Holidays Ltd.
 Breaks In Cornwall is a trading division of Travelsmith Holidays Ltd.

The Channel Islands

Holidays by sea, or air with departures throughout the UK, operated by Travelsmith Ltd.

Telephone: 01621 784666

By Air: www.jerseyandguernsey.com www.alderneyholidays.com **By Sea:** www.condorbreaks.com

